

East Tennessee

Woodworkers Guild

# ETWG Newsletter

March-April 2024



**Next Meeting May 5, 2024**

The ETWG March meeting will be in person at  
**Woodcraft 6:30 p.m.**

Look for email notification closer to the event for Zoom Link or go to the ETWG website.

## **President's Message**

### May Presidents Message

For ETWG members, the month of April can be quite busy with the Saturday class on chair making by Tom McLaughlin and the Arrowmont weekend on veneering by Michael McDunn.

ETWG was privileged to have custom furniture builder, author and instructor Tom McLaughlin give a class on chair making. This informative and entertaining session made the complex joinery look simple. He started with making a template for the rear leg that included the location of the mortises. Then demonstrating his skill with a bandsaw, he quickly shaped and smoothed the leg. Tips included non-obvious things like making the jig for positioning the leg on the mortise machine. For those of you that missed it, you can find him at [epicwoodworking.com](http://epicwoodworking.com)

While I'm on grandkid duty I'll miss the Arrowmont weekend. The weekend, devoted to topics on veneering will be lead by Michael McDunn. Michael is a retired professional woodworker from Greenville SC. A gallery of his work can be found at [www.mcdunnstudio.com](http://www.mcdunnstudio.com).

Thanks to Bill Key for arranging both of these quality learning experiences. Our May meeting will include a talk by UT Professor Adam Taylor titled "From Trash to Treasure: How Lumber is Graded" Dr. Taylor describes himself as "a wood scientist and the Extension Wood Products Specialist. I try to help people use more wood, and to use it better." Thanks to Tom Mueller for arranging this talk.

Mike Casey

### **Future Meeting July** *Make a stool for the workshop, kitchen, home pub,...*

*Over the last few years, I've built a dozen stools of several designs. The work has been at least as rewarding as building a chair, and usually doesn't take as long. Stools are generally more versatile, useful, lighter in weight and offer greater design freedom. As a start, you can choose the seat height without restriction, rather than being tied to the typical chair seat height. Each piece can be tailored for its special application. You may need to swivel your body left and right for a project on your workbench. For that a stool with a round seat is well-suited. If you're at the drawing board or computer, focusing straight ahead, a directionally scooped seat is better and more comfortable*

*The presentation will focus mainly on the making, with a word about design. Construction of four-legged and three-legged versions will be covered, with a bit on a couple of novelty stools if there is time. Making and shaping the main components: seats, legs, and stretchers will be shown. Cutting and fitting the joinery accurately are crucial. We'll describe precise and reproducible methods for doing this.*

*Have a seat. Lou Mansur*

## Presentation-Tony Grenis

Our March presentation was given by guild member Tony Grenis. Tony presented how he uses epoxy resin in making a river table or charcuterie board. He covered many technical details on products and procedures, but also offered many “do’s and don’ts” from his own experience. What works and what doesn’t work.

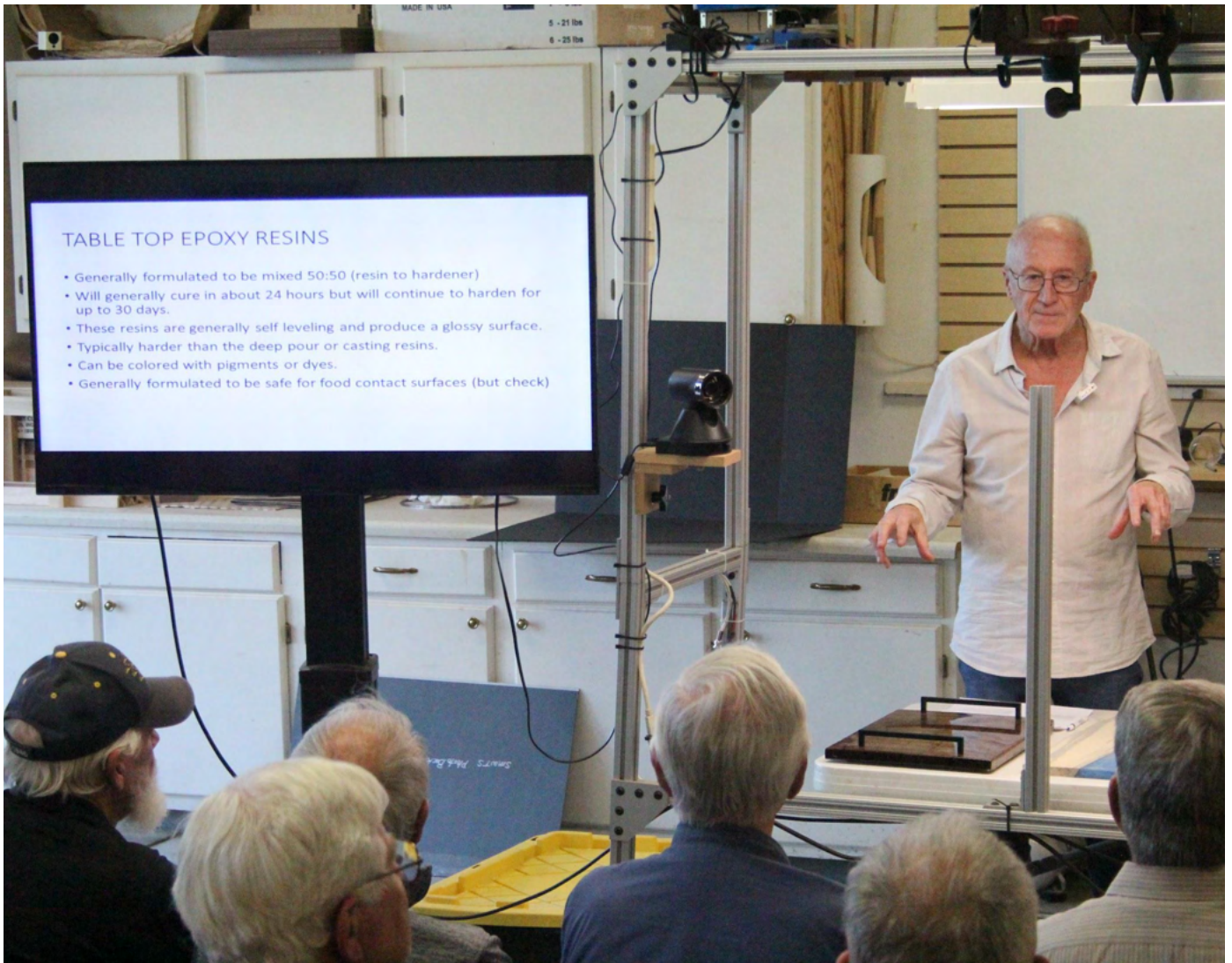


Tony had actual examples of some of his boards and an extensive slide show to illustrate various ways that he incorporates epoxy resin into his designs.





## Presentation-(cont'd)



Tony explaining specifics of his different charcuterie boards.



## Presentation-(cont'd)



To conclude Tony's presentation he shared slides of some of his finished projects like this dining table. If you were at the meeting be sure to thank Tony for this excellent presentation.



## Show and Tell



Jerry Spady shows a plaque he designed to identify and commemorate a piece of scientific lab equipment that he helped recondition. Maybe an incubator to study anaerobes?



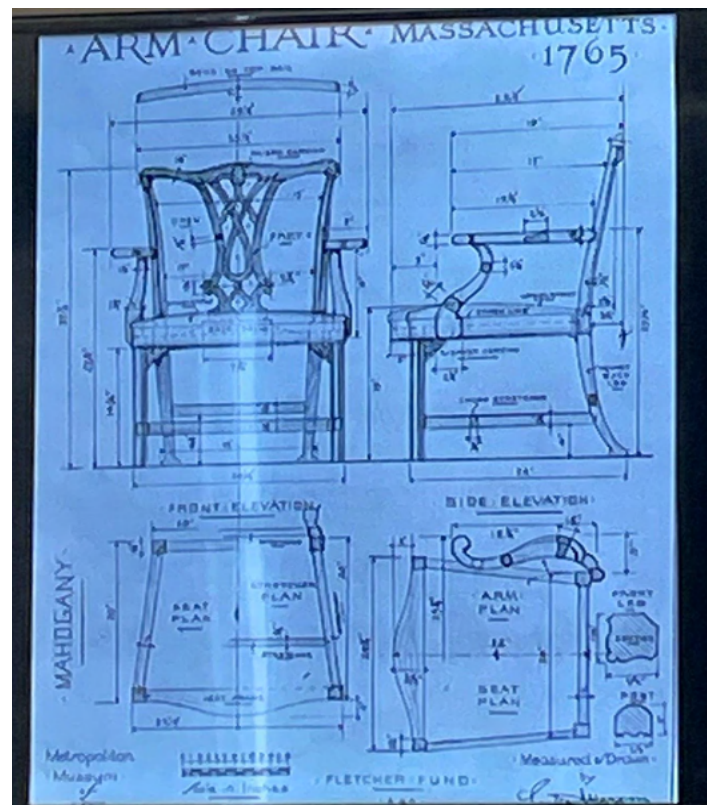
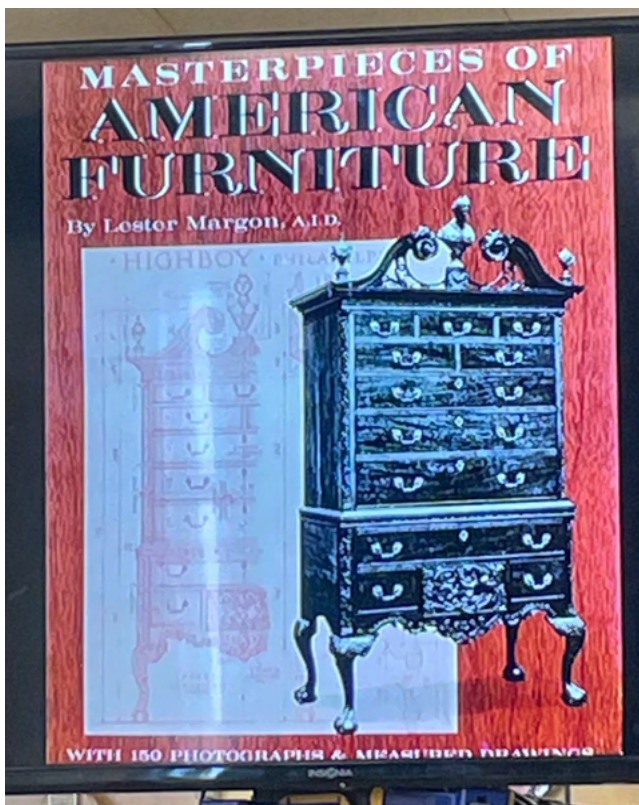
Tom Sciple shows a bowl he turned of beautifully figured purple heart. His finish?, *"I finish all of my bowls with wipe-on poly, applied with panty hose."*





## Education Program-Tom McLaughlin

Tom McLaughlin did a fantastic presentation for the guild at Woodcraft. The presentation was an overview of chairmaking and chair design.



He began with some history of chairmaking and design, and talked about design drawings and the importance of working from full size drawings.



## Education Program-Tom McLaughlin (continued)

Tom continued by showing a basic framed chair with straight members and 90 degree angles. What does work about his chair? and how to improve this chair in terms of comfort and esthetics?

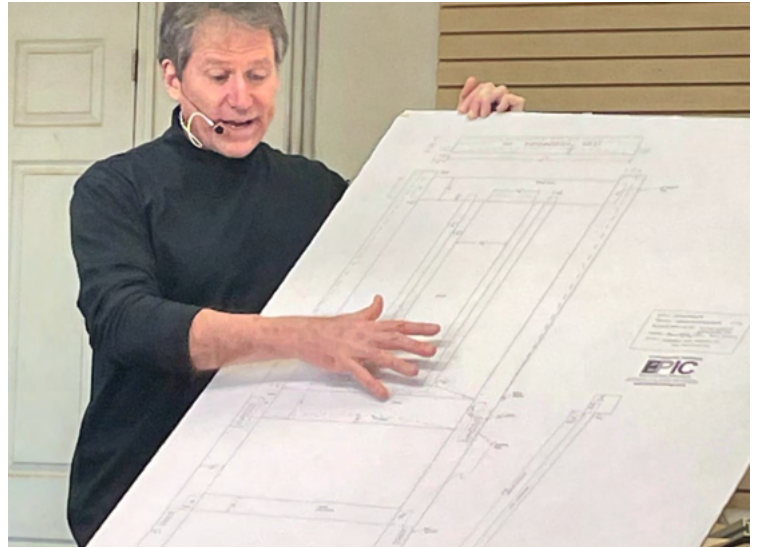
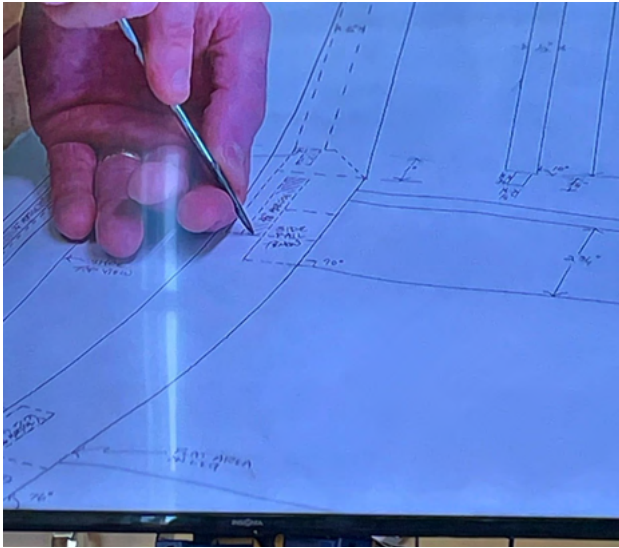


The next chair Tom presented was a craftsman chair that he designed and used to explain the refinements from the square chair design.



## Education Program-Tom McLaughlin (continued)

Tom spent some time talking about working with full size plans, and demonstrated transferring information from plans to a pattern or template. He talked through the steps of making the chair parts and the joinery and the assembly of the chair.



Tom continued his discussion with a Queen Anne chair emphasizing the similar construction, and talked about sculpting the various parts.



## Education Program-Tom McLaughlin (continued)

Tom concluded by showing another chair he designed that was inspired by Hans Wegman's "Round Chair", The construction of the curved back was similar to a segmented turning.



The discussion of the four chairs was very complete and flowed from a rectilinear form to and more pure sculptural form. Full circle-square chair to round chair.



## Education

### Education News

The Tom McLaughlin class on April 6 was a success and if you were unable to attend a recording of the class may become available on the Guild website. If it does become available and you decide to watch, please consider making a donation to the guild. These classes are fairly expensive and the Guild along with those who attended in person contributed financially to making this happen.



A big thanks to Jim Vogelsang and Andy Milligan for their time and effort with the set-up and running the video, recording, etc. during the class. Be sure and thank these guys when you get a chance. Also thanks to those who helped with the set-up and take down before and after the class. Finally, be sure and thank Everett at Woodcraft for allowing us to use his facility for these events.

### Woodworkers Weekend at Arrowmont

April 26 is almost here and final plans have been made for the weekend. We still have room for a couple of people, so if you want to join us send me (Bill Key) a text or email (410-961-4784; keyws1@gmail.com).

Michael McDunn is going to be our instructor on veneering and he has put together what looks to be an exciting class (April 26 - 28).

## Membership

Please contact Mike Casey or any member of the board if you need a nametag.  
mecasey4235@gmail.com

A new Membership Directory is available to members. Be sure to pick one up at the meeting.

**Membership Dues for 2024 will be collected at the meeting, See Charlie Cutler.**

Mail your check for **\$50** to Charlie Cutler.

East Tennessee Woodworkers Guild

% Charlie Cutler

1631 Laramie Lane

Seymour, TN 37865

## Juried Membership

In perusing the membership contact list, you will notice that about one in five is designated as having juried status. The term denotes the highest level of achievement in woodworking, as rated by a jury of the most accomplished woodworkers within the Guild. Juried members serve as a resource, who can be consulted on a wide range of questions ranging from design, to specific techniques, tools and methods.

To seek juried status a member may request that their work be evaluated. To help decide whether work is ready to be considered by a jury, it is recommended that you start with self-evaluations. First, do your pieces meet your own highest standards? Be honest and critical. Second, as objectively as you can, compare your pieces to recognized works of merit.

Examples may be those displayed at the ETWG Master Woodworkers Shows, at national shows generally acknowledged to highlight the finest furniture and woodwork, and within highly distilled magazines like Finewoodworking. If your work does not do well by comparison, in your judgement, then delay your request to be juried. Make some improved pieces based on what you have learned.

If you are ready to take the leap, contact Lou Mansur our ETWG standards committee chairman [mansurlk@comcast.net](mailto:mansurlk@comcast.net).



# Your Guild

How can you be more involved?

- We are currently looking for someone to take Bill Key's place as Education Committee Chair. Contact any Member of the Board if you have an interest in being more involved. Bill and has done a wonderful job, but it is time for someone else to step up. If this position doesn't fit there is most likely another position that will help you be involved.

## Guild Staff

### Board of Directors and Special Advisors

President	Mike Casey
Director Treasurer	Charlie Cutler
Director Secretary	Tom Ehrnschwender
Director	Jim Vogelsang
Director	Lou Mansur
Director	Jeff White
Director	Bill Key (end of term)

### Committee Chairs and Project Coordinators

Education Committee	Bill Key (end of term)
Standards Committee	Lou Mansur
Membership Committee	Mike Casey
Door Prizes	Charlie Cutler
Newsletter	Tom Ehrnschwender
Web/Audio Visual	Jim Vogelsang
Photographer	Tom Zachman
Assistant Photographers	Brent Quarles & Pat Bryan

